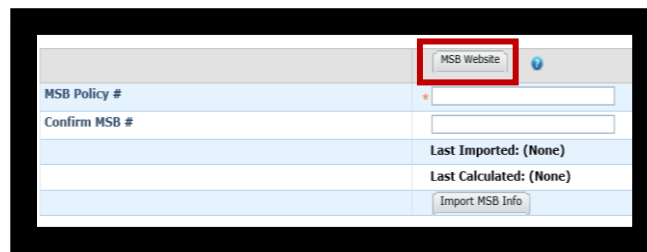


# Importing a Replacement Cost Valuation (CoreLogic's RCT Express/MSB for Residential Policies)

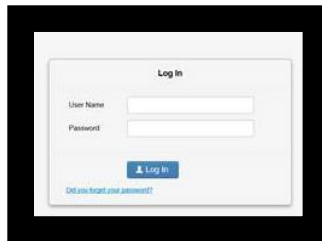
This job aid demonstrates how to import a replacement cost valuation on Residential policies into TWIA Policy Center. This product can be referred to as CoreLogic's RCT Express or MSB.

1. Once you have entered the required location information in Policy Center on the Locations and Risk Items screen, follow the on-screen text regarding importing an MSB. Click the "MSB Website" button, which will take you to the Replacement Cost Valuation Tool on the CoreLogic/MSB site in a separate browser window.



The screenshot shows a web application interface for importing MSB information. At the top right, there is a button labeled "MSB Website" with a blue question mark icon, which is highlighted with a red rectangular box. Below this, there are two input fields: "MSB Policy #" and "Confirm MSB #". To the right of these fields, there are two status indicators: "Last Imported: (None)" and "Last Calculated: (None)". At the bottom right, there is a button labeled "Import MSB Info".

2. Login to the Replacement Cost Valuation Tool to calculate the replacement value of the property on the application with TWIA.



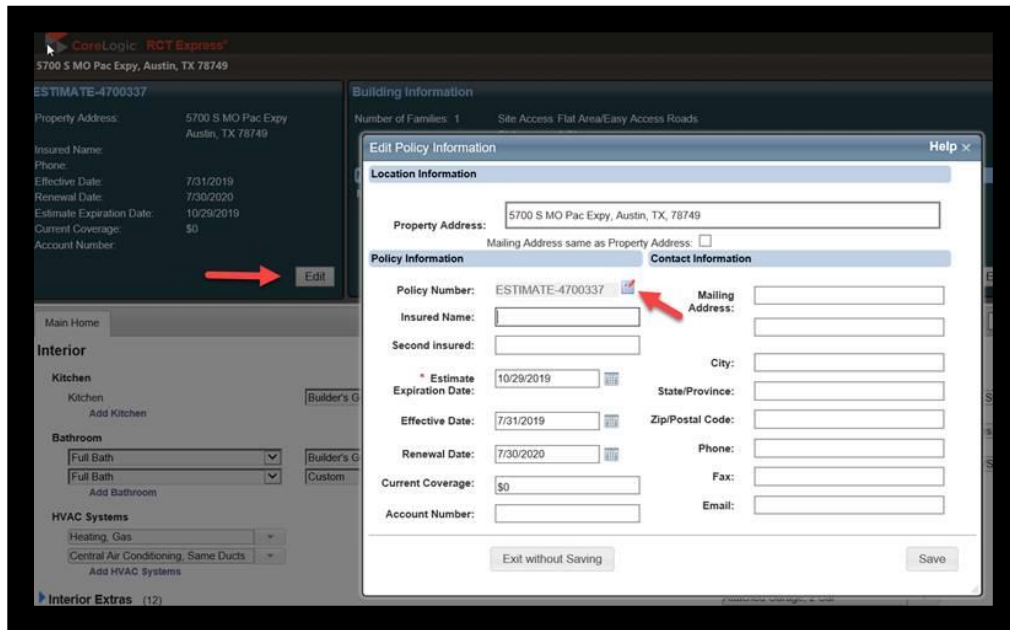
The screenshot shows a "Log In" screen with two input fields: "User Name" and "Password". Below the fields is a blue "Log In" button. At the bottom left, there is a small link that says "Did you forget your password?".

For assistance with this tool, refer to the CoreLogic/MSB help pages by clicking on the Help button in the top right-hand corner of the screen.

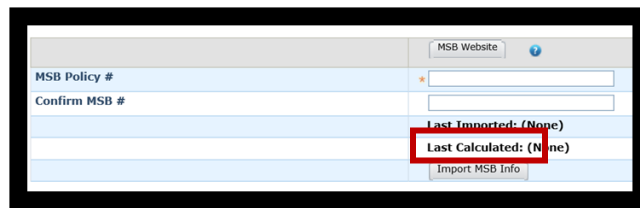
For questions, please call 1-800-788-8247 or email us at [agentservices@twia.org](mailto:agentservices@twia.org)



3. Edit the “policy number” in the Replacement Cost Valuation Tool/MSB to remove the word “estimate.” When creating the valuation, the policy number is automatically generated and will include the word “estimate” by default. This needs to be removed to properly populate in Policy Center.



4. Then, back in Policy Center, enter the “policy number” name you assigned to the valuation in “MSB Policy #” and in “Confirm MSB #”. Click the “Import MSB Info” button to import the valuation data.



For questions, please call 1-800-788-8247 or email us at [agentservices@twia.org](mailto:agentservices@twia.org)

